

# BMB Newsletter

PAGE 1/1 15/10/2020

## BMB COVID-19 UPDATE 2020: INCREASE IN FIRST AID CONTRIBUTIONS FOR THE SECOND WAVE

On 14/10/2020, the government announced an instant increase in contributions to preserve jobs. The original contributions will increase **by 50%**. The way of calculation of the contributions to preserve jobs will change, too. The original calculation based on the gross wages of the employee will change to **80 % of the total employer's cost of work, i.e. the contributions will cover part of employer's social & health insurance contributions, too.**

With respect to the Measure 3B (decrease in sales revenues), the change means that if the sales revenues of the taxpayer fall by 80 %, it will be eligible for the contribution in the amount of **€ 810 per employee** (originally € 540).

Important changes were made also to the temporary Kurzarbeit concept – Measure 3A. **The government has increased the upper limit for these contributions from € 880 to € 1,100 per employee.**

Templates of applications for the increased contributions should be accessible **from 01/11/2020** at pomahameludom.sk. It will be possible to receive increased contributions starting with the month of October 2020.

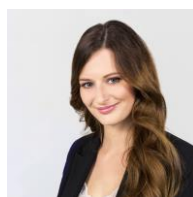
**IMPORTANT:** To be able to receive increased contributions, taxpayers **will have to sign supplements** to the agreements concluded with the competent Labour Office.

The Transport Ministry has introduced a **contribution to taxpayers in tourism industry** (restaurants, hotels etc....) whose sales revenues have fallen by over 40 % compared to 2019. The contribution will range from 4 % to 10 % of the turnover for the relevant month depending on the sales revenues decrease. The new contributions may be applied for retroactively since 01/04/2020.

Authors:



Renáta Bláhová  
Tax advisor  
and auditor



Eva Kusá  
Tax consultant

*This material is for information purposes only. Although it was prepared with due professional care, the firm BMB Partners will not be held liable for any errors or inaccuracies, nor will it be held liable for any damage sustained as a result of reliance on this information. In any case, we advise you to seek professional advice for a particular issue.*